

# BIOSCIENCE



Greater Portland is emerging as a hotbed for new companies in computational biology, biochemistry and cellular programming. These companies are delivering life-changing innovations, and our region's output is sure to grow as Greater Portland continues to attract the world's best bioscience minds.

## Our industry strengths

### HIGHLY-SKILLED TALENT



Specialized university labs in the region include OHSU's National Primate Research Center, UO's Genomics & Cell Characterization Core Facility and OHSU's biolibrary of tissues and blood. This access to hands-on education boosts the number of STEM occupations, which made up **24% of our region's jobs in 2020**.

### SILICON FOREST EXPERTISE



Home to **Intel's global R&D headquarters**, Greater Portland is uniquely positioned to support bioscience companies, which share the semiconductor industry's engineering talent pool and suppliers, as well as experts practiced in delivering **cleanrooms for product testing and development**.

### CANCER TREATMENT PIONEER



Oregon Health & Science University is the region's premier research institution. It employs 18,000 and received more than **\$405 million in federal grant funding** in 2021. OHSU is home to the Knight Cancer Institute, which is leading the world in personalized cancer medicine.

## REGIONAL INDUSTRY HIGHLIGHTS

7,800

Employees

208

Establishments

Top 10

Greater Portland is considered a top 10 emerging bioscience market by real estate firm CBRE.

\$324M

Oregon and SW Washington biotech companies raised a record amount across 37 deals in 2021.

2x scientists

Greater Portland has twice the average national concentration of life scientists and biological technicians.

## KEY PORTLAND METRO EMPLOYERS

**Genentech** 1,246

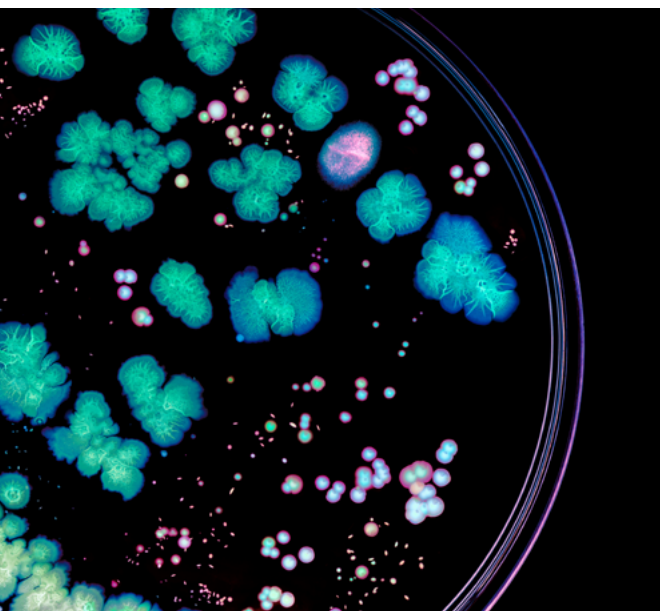
**ThermoFisher  
SCIENTIFIC** 1,062

**MICRO SYSTEMS  
ENGINEERING** 550\*

**+ acumed** 405\*

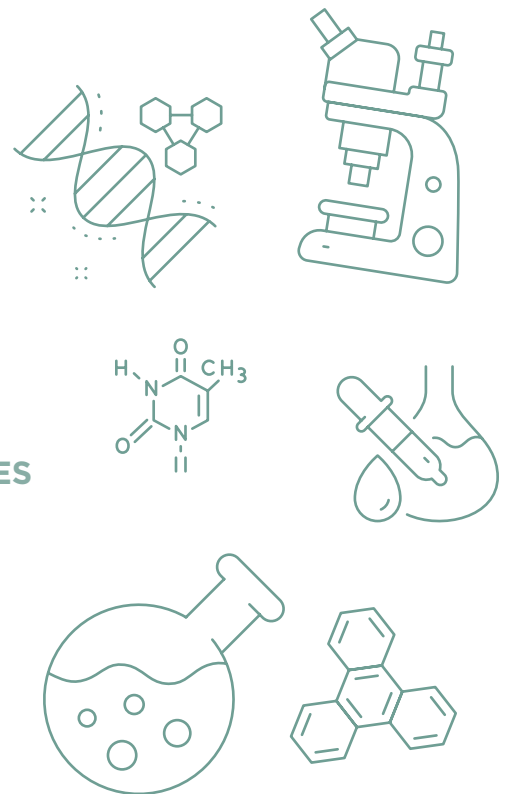
**absci** 200\*

\*Denotes headquarters



# BIOSCIENCE ECOSYSTEM

## Industry Clusters



### PHARMACEUTICALS & RESEARCH

- Absci
- AgonOx
- Aronora
- Capsigen
- CytoDyn
- Genentech
- ICON
- Lacamas Laboratories
- PDX Pharmaceuticals
- Twist Bioscience
- Vetsource
- Yecuris

### MEDICAL DEVICES

- Biotronik
- Hemex Health
- Thermo Fisher Scientific

### MEDICAL TECHNOLOGIES

- BioSpeech
- Micro Systems Technologies

### MEDICAL & DENTAL EQUIPMENT

- A-dec
- Acumed
- Welch Allyn



Research lab at Portland State University

## TWIST BIOSCIENCE BUILDING “FACTORY OF THE FUTURE” IN WILSONVILLE

Twist, based in San Francisco, manufactures synthetic DNA by “writing” the DNA on a silicon chip. Applications of this unique technology include synthetic genes, tools for next-generation sequencing preparation, and antibody libraries for drug discovery and development.

Twist’s 110,000-square-foot facility in Wilsonville will create as many as 400 bioscience jobs, further solidifying Greater Portland’s growing reputation as a hub for firms at the forefront of cutting-edge biotechnology innovation.

## CONNECT WITH US

 @GreaterPDX

 facebook.com/  
GreaterPortlandInc

 linkedin.com/company/  
greater-portland-inc

 @GreaterPortlandInc

[greaterportlandinc.com](http://greaterportlandinc.com)  
[bizdev@greaterportlandinc.com](mailto:bizdev@greaterportlandinc.com)  
503-445-8065